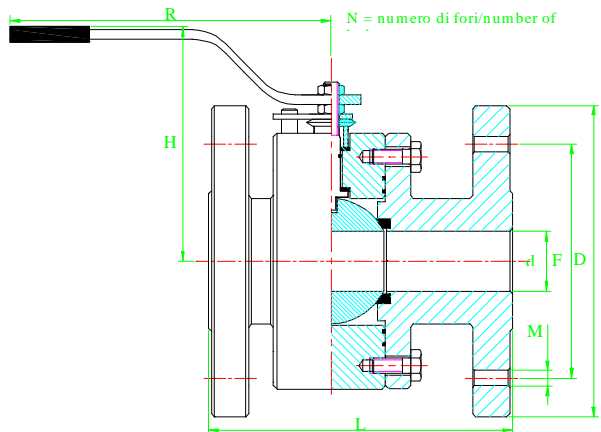


Valvola Split Body

Split Body Valve



Valvola a Sfera

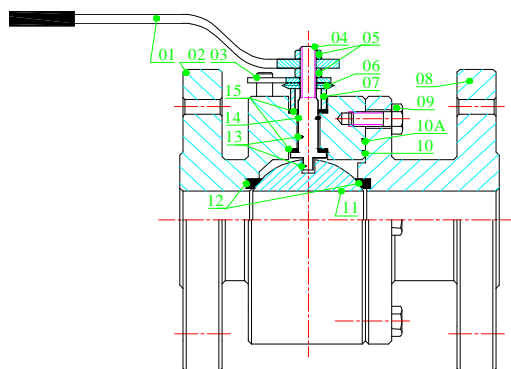
Tipo: 2-vie
 Corpo: ASTM A105 – ASTM A350 Gr LF2
 Passaggio: Totale
 Sfera: AISI 304
 Misure: da DN 15 a DN 200
 Pressione: PN 10-64 o 150/300#
 Guarnizione e sedi: P.T.F.E. vergine
 Temperatura di esercizio: 0°C +150°C (ASTM A105)
 -40°C +60°C (ASTM A350 Gr LF2)
 Finitura esterna: zincatura tropicalizzata
 Finitura superficie di tenuta: in accordo alla EN 1092-1

Ball Valve

Type: 2-way
 Body: ASTM A105 - ASTM A350 Gr LF2
 Bore: Full
 Ball: AISI 304
 Size: from DN 15 up to DN 200
 Pressure class: PN 10-64 or 150/300#
 Seals and seats: P.T.F.E. virgin
 Operating temperature: 0°C +150°C (ASTM A105)
 -40°C +60°C (ASTM A350 Gr LF2)
 Surface finish: tropicalized galvanization
 Surface roughness: according to EN 1092-1

Dimensioni / Dimensions (mm) (N, ØM, ØD & ØF secondo / according DIN 2501 / ANSI B16.5)

DN	15	20	25	32	40	50	65	80	100	125	150	200
	½"	¾"	1"	1¼"	1½"	2"	2½"	3"	4"	5"	6"	8"
Ød	14	20	24	32	38	48	62	75	97	118	144	194
H	100	105	100	105	110	128	200	215	220	230	250	305
R	148	148	174	274	274	286	386	386	515	515	670	930
L (≤PN40, F4)	115	120	125	130	140	150	170	180	190			
L (≤PN40, F5)										325	350	400
L (≤PN40, F1) o (PN64)	130	150	160	170	200	230	290	310	350	400	480	600
L (ANSI 150)	108	117	127	140	165	178	190	203	229	254	267	457
L (ANSI 300)	140	152	165	180	191	216	241	283	305	381	403	457
Kg (≤PN40, F4)	3	4,5	5,8	8,5	10	14	22	27	38	72	87	
Kg (ANSI 150)	3,3	4	5	7	9,5	15	23	26,5	44			
Kg (ANSI 300)	4	5,5	7,5		13	18,5		60				



Nr.	Parti	Parts	Mat.
01	Leva	Handle	A 37 Zn
02	Corpo	Body	A105
03	Arresto	Stop	A 37
04	Stelo	Stem	AISI 420
05	Dado	Nut	S 6 Zn
06	Molle a Tazza	Disc Springs	50 Cr V4
07	Premibussola	Pressing Bush	A105 Zn
08	Chiusura	Bonnet	A105
09	Bullone	Bolt	8.8
10	Guarnizione Corpo	Gasket	P.T.F.E.
10 A	Guarnizione Corpo	Gasket	VITON
11	Sfera	Ball	AISI 304
12	Sedi	Seat Rings	P.T.F.E.
13	Dispositivo Antistatico	Antistatic Device	AISI 304
14	O-Ring	O-Ring	VITON
15	Guarnizione Stelo	Seal Rings	P.T.F.E.

CE mark according to 97/23/CE (PED)
 Ex mark according to 94/9/CE (ATEX)
 Antistatic device according to BS5146
 Fire safe design according to BS6755

SAMTECH
 Gas Systems

WWW.SAMTECHGAS.COM
 Tel. +39 049 9903931 Fax +39 049 9903928